

LAMPIRAN

Lampiran 1.0 Persentase Penduduk Miskin Menurut Provinsi di Indonesia

Provinsi	PENDUDUK MISKIN (%)										
	2009	2010	2011	2012	2013	2014	2015	2016	2017	2018	2019
ACEH	21.80	20.98	19.57	18.58	17.72	16.98	17.11	16.43	15.92	15.68	15.01
SUMUT	11.51	11.31	11.33	10.41	10.39	9.85	10.79	10.27	9.28	8.94	8.63
SUBAR	9.54	9.50	9.04	8.00	7.56	6.89	6.71	7.14	6.75	6.55	6.29
RIAU	9.48	8.65	8.47	8.05	8.42	7.99	8.82	7.67	7.41	7.21	6.90
JAMBI	8.77	8.34	8.65	8.28	8.42	8.39	9.12	8.37	7.90	7.85	7.51
SUMSEL	16.28	15.47	14.24	13.48	14.06	13.62	13.77	13.39	13.10	12.82	12.56
BENGKUL	18.59	18.30	17.50	17.51	17.75	17.09	17.16	17.03	15.59	15.41	14.91
LAMPUNG	20.22	18.94	16.93	15.65	14.39	14.21	13.53	13.86	13.04	13.01	12.30
KBB	7.46	6.51	5.75	5.37	5.25	4.97	4.83	5.04	5.30	4.77	4.50
KEP. RIAU	8.27	8.05	7.40	6.83	6.35	6.40	5.78	5.84	6.13	5.83	5.80
JKT	3.62	3.48	3.75	3.70	3.72	4.09	3.61	3.75	3.78	3.55	3.42
JABAR	11.96	11.27	10.65	9.89	9.61	9.18	9.57	8.77	7.83	7.25	6.82
JATENG	17.72	16.56	15.76	14.98	14.44	13.58	13.32	13.19	12.23	11.19	10.58
DIY	17.23	16.83	16.08	15.88	15.03	14.55	13.16	13.10	12.36	11.81	11.44
JATIM	16.68	15.26	14.23	13.08	12.73	12.28	12.28	11.85	11.20	10.85	10.20
BANTEN	7.64	7.16	6.32	5.71	5.89	5.51	5.75	5.36	5.59	5.25	4.94
BALI	5.13	4.88	4.20	3.95	4.49	4.76	5.25	4.15	4.14	3.91	3.61
NTB	22.78	21.55	19.73	18.02	17.25	17.05	16.54	16.02	15.05	14.63	13.88
NTT	23.31	23.03	21.23	20.41	20.24	19.60	22.58	22.01	21.38	21.03	20.62
KALBAR	9.30	9.02	8.60	7.96	8.74	8.07	8.44	8.00	7.86	7.37	7.28
KALTENG	7.02	6.77	6.56	6.19	6.23	6.07	5.91	5.36	5.26	5.10	4.81
KALSEL	5.12	5.21	5.29	5.01	4.76	4.81	4.72	4.52	4.70	4.65	4.47
KALTIM	7.73	7.66	6.77	6.38	6.38	6.31	6.10	6.00	6.08	6.06	5.91
SULUT	9.79	9.10	8.51	7.64	8.50	8.26	8.98	8.20	7.90	7.59	7.51
SULTENG	18.98	18.07	15.83	14.94	14.32	13.61	14.07	14.09	14.22	13.69	13.18
SULSEL	12.31	11.60	10.29	9.82	10.32	9.54	10.12	9.24	9.48	8.87	8.56
SULTENG	18.93	17.05	14.56	13.06	13.73	12.77	13.74	12.77	11.97	11.32	11.04
GORONTA	25.01	23.19	18.75	17.22	18.01	17.41	18.16	17.63	17.14	15.83	15.31
SULBAR	15.29	13.58	13.89	13.01	12.23	12.05	11.90	11.19	11.18	11.22	10.95
MALUKU	28.23	27.74	23.00	20.76	19.27	18.44	19.36	19.26	18.29	17.85	17.65
MALTARA	10.36	9.42	9.18	8.06	7.64	7.41	6.22	6.41	6.44	6.62	6.91
PB	35.71	34.88	31.92	27.04	27.14	26.26	25.73	24.88	23.12	22.66	21.51
PAPUA	37.53	36.80	31.98	30.66	31.53	27.80	28.40	28.40	27.76	27.43	26.55
INDONESIA	14.15	13.33	12.49	11.66	11.47	10.96	11.13	10.70	10.12	9.66	9.22

Lampiran 2.0 Indeks Aspek Kebebasan Sipil Menurut Provinsi di Indonesia

provinsi	Aspek Kebebasan Sipil										
	2009	2010	2011	2012	2013	2014	2015	2016	2017	2018	2019
Aceh	64,42	69,98	58,65	60,16	71,78	69,76	74,81	92,92	87,27	96,79	93,28
Sumut	84,16	76,64	79,23	73,85	73,65	79,86	82,02	82,71	74,75	76,54	72,54
Subar	63,06	58,34	60,57	57,1	54,88	47,21	52,99	51,01	61,66	55,32	56,58
Riau	93,14	91,02	83,12	80,21	77,71	74,35	66,46	71,78	82,03	86,88	85,15
Jambi	95,86	85,15	91,62	86,23	84,95	78,23	75,89	84,39	86,81	72,88	76,67
Sumsel	95,42	100	84,05	93,26	91,45	86,09	96,06	91,17	90,83	83,13	80,54
Bengkulu	94,26	94,4	94,1	77,76	71,57	79,49	78,5	85,14	88,51	78,77	93,98
Lampung	90,57	94,39	93,14	94,14	70,75	72,06	71,99	60,49	74,12	77,29	78,46
Kbb	96,51	85,95	88,27	83,09	85,16	89,8	81,25	87,65	83,07	80,95	84,12
Kep. Riau	96,22	87,04	87,15	82,68	80,08	82,47	80,16	85,43	90,84	91,05	92,66
Jkt	91,65	92,46	89,94	88,11	88,72	91,72	89,64	81,11	87,73	95,09	91,01
Jabar	85,84	74,41	78,92	65,93	79,84	83,95	79,1	73,37	73,61	74,9	65,16
Jateng	86,48	84,83	84,05	75,03	79,18	87,87	79,44	66,06	69,07	76,21	78,43
Diy	92,15	91,24	87,22	87,39	90,78	86,25	90,41	90	93,25	90,6	92,9
Jatim	83,3	78,48	71,58	80,97	71,37	81,62	85,26	73,73	78,98	77,21	72,14
Banten	95,46	83,17	80,41	79,2	81,39	81,1	74,28	83,47	85,16	86,59	83,83
Bali	93,97	94,1	95,44	94,18	92,55	92,16	94,42	96,94	95,51	94,72	90,6
Ntb	68,05	67,22	55,45	58,31	59,68	58,73	51,59	65,06	79,4	78,28	78,36
Ntt	95,55	95,55	96,79	91,06	95,59	85,92	93,19	96,25	79,69	94	93,97
Kalbar	98,29	99,17	97,15	92,37	97,54	98,44	96,81	83,29	97,15	93,87	92,59
Kalteng	98,45	94,51	92,56	68,44	81,89	92,93	85,07	84,98	95,58	90,09	86,31
Kalsel	68,24	67,74	56,33	49,51	58,03	58,43	54,15	61,04	60,16	69,26	68,01
Kaltim	98,22	97,79	91,84	97,16	92,14	93,28	93,07	78,25	83,33	90,99	88,5
Sulut	92,23	92,98	98,44	95,64	92,44	93,56	86,71	96,31	90,87	88,9	95,19
Sulteng	98,51	92,19	92,23	93,43	90,03	86,56	94,6	80,39	90,04	91,9	96,19
Sulsel	82,94	78,19	80,97	87,07	81,3	86,27	69,38	75,54	77,48	72,44	68,32
Sultengg	94,66	83,71	85,81	91,39	84,32	90,89	91,14	88,07	77,66	79,77	80,31
Gorontalo	96,05	82,55	81,8	73,25	79,31	82,19	81,35	82,35	85,3	79,33	75,17
Sulbar	93,82	94,48	94,8	88,67	88,51	90,22	81,88	82,89	73,56	87,41	81,58
Maluku	92,77	96,22	90,7	76,05	81,52	90,85	76,04	87,17	81,78	81,38	87,06
Maltara	93,61	92,59	90,04	88,15	83,67	76,9	73,53	92,27	90,19	78,94	85,61
Pb	93,14	99,84	93,59	94,42	92,33	97,93	92,33	93,67	92,42	82,11	70,35
Papua	92,83	90,72	87,73	91,11	90,21	85,69	82,72	92,15	89,09	84,36	93,08
Indonesia	87	82,53	80,8	77,94	79	82,62	80,3	76,45	78,8	78,5	77,2

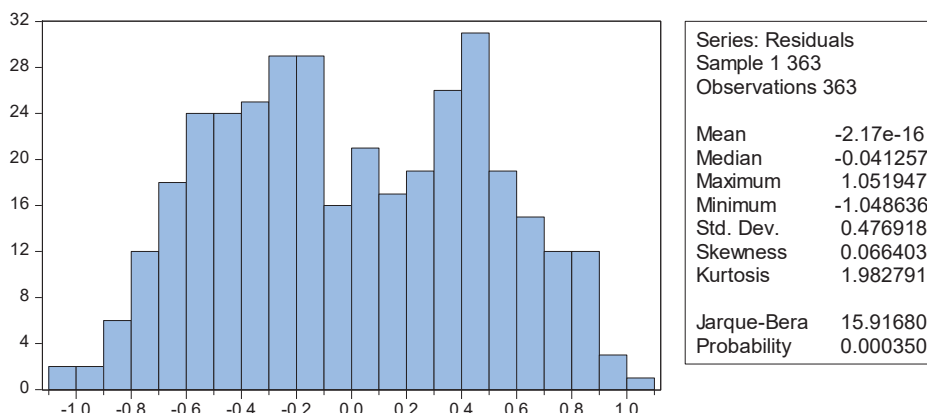
Lampiran 3.0 Indeks Aspek Hak-Hak Politik Menurut Provinsi di Indonesia

provinsi	aspek hak-hak politik										
	2009	2010	2011	2012	2013	2014	2015	2016	2017	2018	2019
Aceh	70,39	62,63	47,9	47,16	48,59	63,94	63,98	63,94	63,94	68,09	65,22
Sumut	41,26	57,42	59,47	49,82	49,5	61,97	62,17	62,29	62,29	62,61	61,59
Subar	53,57	63,9	59,21	50,85	38,97	61,82	69,77	54,33	61,08	62,84	61,06
Riau	65,4	47,19	52,9	47,16	52,19	59,74	66,61	77,98	66,57	62,77	61,68
Jambi	50,41	48,14	46,27	46,6	41,91	54,01	62,12	65,63	62,08	62,76	64,63
Sumsel	56,07	55,17	49,41	55,21	50,32	63,57	78,79	81,94	63,9	73,12	81,95
Bengkulu	54,03	64,35	59,47	48,93	49,28	63,98	68,45	63,84	59,42	62,18	73,17
Lampung	51,81	53,9	61,15	50,6	45,47	63,69	63,19	59,32	67,2	59,53	63,7
Kbb	48,29	48,44	47,11	51,21	50,6	56,48	66,95	81,09	82,3	73,56	71,71
Kep. Riau	59,47	39,8	56	49,98	49,63	58,35	65,01	71,28	71,45	77,54	78,3
Jkt	52,2	56,19	58,32	62,52	55,08	73,94	83,19	67,54	80,86	75,43	83,86
Jabar	68,48	46,74	46,42	46,58	46,74	65,22	81,89	72,34	71,02	64,78	71,15
Jateng	51,85	46,29	46,29	46,29	46,29	67,08	67,28	67,24	67,24	66,92	67,91
Diy	52,52	55,96	52,35	55,52	50,65	76,07	77,98	81,59	82,31	75,07	72,51
Jatim	50,96	42,06	40,32	36,17	35,43	56,29	67,44	76,49	60,98	67,45	80,25
Banten	49,47	38,7	44,57	51,03	51,03	63,68	63,72	68,3	63,87	60,11	60,29
Bali	49,82	51,52	50,08	45	52,87	61,27	77,42	69,6	66,8	68,08	68,38
Ntb	47,5	46,48	49,6	49,6	49,6	62,08	61,11	62,08	62,08	62,08	66,14
Ntt	51,46	55,89	47,56	50,89	58,83	65,13	71,69	81,68	69,75	71,85	78,58
Kalbar	53,46	45,19	49,34	37,18	49,36	63,12	65,57	75,7	76,36	64,01	71,45
Kalteng	60,5	56,05	54,73	51,05	50,69	66,42	68,31	70,66	56,69	50,46	78,24
Kalsel	62,63	72,66	64,25	52,59	56,35	76,45	85,77	83,58	81,09	83,03	86,52
Kaltim	54,78	53,89	45,12	51,69	55,36	70,42	82,74	78,35	67,18	61,38	66,27
Sulut	58,5	44,9	52,86	58,65	62,55	80,89	77,92	70,42	72,12	69,53	63,54
Sulteng	45,9	51,82	37,01	37,65	36,78	59,01	68,85	67,89	55,88	54,94	53,21
Sulsel	42,36	32,4	39,33	43,74	50,62	73,99	64,25	61,51	64,58	64,05	65,61
Sultengg	43,97	30,46	29,18	29,5	28,95	53,2	56,95	55,51	60,49	67,59	52,18
Gorontalo	56,39	51,72	44,36	50,76	58,26	63,67	69,97	75,54	68,18	64,95	76,93
Sulbar	53,09	47,22	42,65	35,92	44,05	63,64	61,16	69,02	60,84	55,05	70,22
Maluku	52,05	48,12	46,14	45,08	50,53	60,03	63,2	76,18	74,85	72,86	55,62
Maltara	46,3	30,82	32,61	50,13	48,94	60,61	61	61,79	65,84	62,39	64,86
Pb	37,09	44,24	43,99	45,74	35,93	39,29	39,48	38,05	39,05	40,11	50,31
Papua	43,84	31,76	29,43	32,99	31,37	42,51	41,81	41,13	42,16	47,9	51,16
Indonesia	54,6	47,87	47,5	46,33	46,25	63,72	70,63	70,11	66,6	65,8	70,71

Lampiran 4.0 Indeks Aspek Lembaga Demokrasi Menurut Provinsi di Indonesia

Provinsi	Aspek Lembaga Demokrasi										
	2009	2010	2011	2012	2013	2014	2015	2016	2017	2018	2019
Aceh	62,13	63,87	63,77	57,21	76,97	88,73	64,97	60,33	61,47	77,67	79,08
Sumut	60,14	56,45	60,31	53,01	54,9	62,75	63,52	56,13	68,87	51,69	71,12
Subar	67,48	67,59	79,83	81,32	77,17	88,56	82,01	58,82	92,72	88,52	92,21
Riau	70,68	85,39	83,18	81,89	82,32	74,69	63,8	62,34	73,41	89,47	84,19
Jambi	72,43	69,81	82,27	82,18	74,34	89,48	77,72	54,48	77,27	72,92	69,21
Sumsel	69,83	69,85	77,05	76,42	63,22	78,53	61	66,53	69,03	76,01	72,23
Bengkulu	44,7	51,29	61,63	61,79	59,28	74,16	75,61	77,01	74,03	74,13	68,63
Lampung	63,27	56,44	70,64	79,16	81,58	83,66	62,74	64,31	77	72,35	79,22
Kbb	59,65	68,57	72,33	80,97	77,09	87,01	69,6	80,2	72,89	63,76	75,48
Kep. Riau	67,62	69,2	73,66	68,95	76,21	66,61	66,13	59,48	65,82	66,9	73,1
Jkt	86,09	92,3	93,5	88,81	74,69	92,97	83,26	63,19	87,12	87,82	91,89
Jabar	56,61	60,67	81,55	62,51	76,05	65,89	51,37	49,79	59,16	54,8	70,75
Jateng	64,43	63,7	73,04	77,46	60,89	80,77	61,48	66,69	78,82	75,42	90,5
Diy	60,48	82,25	82,81	82,52	83,69	88,82	82,38	86,37	73,55	77,66	78,25
Jatim	54,64	46,47	61,23	52,22	82,1	78,54	81,39	63,63	76,57	75,97	80,55
Banten	62,83	66,99	87,18	70,42	85	87,22	68,66	60,99	74,98	79,4	78,01
Bali	73,24	78,43	85,79	86,01	77,38	79,56	65,31	71,18	76,85	89,55	90,42
Ntb	62,48	65,19	61,06	70,85	66,24	68,38	88,36	71,13	93,98	86,11	91,16
Ntt	73,63	68,15	80,97	84,15	68,23	53,12	70,73	66,46	79,39	84,28	68,62
Kalbar	69,85	70,11	87,38	76,23	58,61	85,84	67,95	64,54	60,85	73,08	68,74
Kalteng	78,69	65,57	90,04	85,82	63,21	81,48	67,05	68,43	82,5	80,65	79,32
Kalsel	70,95	72,25	82,76	89,33	82,54	77,53	83,17	72,89	88,79	88,37	82,67
Kaltim	67,57	72,34	68,1	69,68	58,2	69,94	63,99	60,36	68,72	72,22	82,17
Sulut	63,91	65,34	66,03	80,77	65,56	76,68	72,53	60,62	62,54	76,86	75,82
Sulteng	57,14	58,01	71,36	72,55	76,44	83,42	66,53	68,76	66,44	86,72	91,68
Sulsel	64,88	68,17	86,87	84,66	68,1	63,58	71,84	70,86	72,23	79,75	81,34
Sultengg	58,37	57,06	67,11	58,44	50,32	70,92	61,99	74,66	69,74	78,16	66,9
Gorontalo	72,32	63,9	68,08	55,59	66,22	79,41	81,81	74,42	68,73	76,26	76,7
Sulbar	59,15	66,06	68,26	76,22	64,94	80,39	62,37	64,47	71,39	77,45	83,6
Maluku	66,3	69,89	75,61	62,27	71,95	70,09	57,43	70,13	76,15	72,32	64,55
Maltara	67,23	65,06	62,56	66,55	63,4	68,16	47,25	67,59	54,02	78,92	58,11
Pb	66,48	64,73	50,03	61,27	60,26	66,93	51,81	53,85	63,14	57,21	53,23
Papua	58,97	67,22	70,04	66,5	71,01	63,75	50,87	53,45	56,91	57,05	52,61
Indonesia	62,7	63,11	74,7	69,28	72,24	75,81	66,87	62,05	72,5	75,3	78,73

LAMPIRAN 5.0 UJI NORMALITAS



LAMPIRAN 6.0 MULTIKOLINEARITAS

	KN	AKS	AHP	ALD
KN	1	0.1304464359	-0.377744987	-0.351202427
AKS	0.13044643589	1	-0.1167558337	-0.0812237339
AHP	-0.3777449867	-0.1167558337	1	0.2189703579
ALD	-0.3512024270	-0.0812237339	0.2189703579	1

LAMPIRAN 7.0 HETEROKEDASTISITAS

Heteroskedasticity Test: White

F-statistic	0.954810	Prob. F(9,352)	0.4775
Obs*R-squared	8.626816	Prob. Chi-Square(9)	0.4724
Scaled explained SS	628.0668	Prob. Chi-Square(9)	0.0000

Test Equation:

Dependent Variable: RESID^2

Method: Least Squares

Date: 01/21/23 Time: 10:27

Sample: 2 363

Included observations: 362

Variable	Coefficient	Std. Error	t-Statistic	Prob.
C	-9023.949	175110.2	-0.051533	0.9589
AKS^2	7.394593	12.43925	0.594456	0.5526
AKS*AHP	-13.83967	14.66076	-0.943994	0.3458
AKS*ALD	2.284360	16.21965	0.140839	0.8881
AKS	-426.5397	2625.222	-0.162478	0.8710
AHP^2	9.338393	9.988294	0.934934	0.3505
AHP*ALD	4.535170	15.55202	0.291613	0.7708
AHP	-508.1245	1952.720	-0.260214	0.7949
ALD^2	-12.61205	14.43607	-0.873648	0.3829
ALD	1282.457	2493.430	0.514335	0.6073

LAMPIRAN 8.0 AUTOKORELASI

F-statistic	2.456605	Prob. F(2,356)	0.0872
Obs*R-squared	4.928005	Prob. Chi-Square(2)	0.0851

Test Equation:

Dependent Variable: RESID

Method: Least Squares

Date: 01/21/23 Time: 10:24

Sample: 2 363

Included observations: 362

Presample missing value lagged residuals set to zero.

Variable	Coefficient	Std. Error	t-Statistic	Prob.
C	0.271406	1.804899	0.150372	0.8806
AKS	-0.001489	0.014417	-0.103286	0.9178
AHP	-0.002356	0.012972	-0.181593	0.8560
ALD	-0.000122	0.015472	-0.007912	0.9937
RESID(-1)	-0.022379	0.052700	-0.424648	0.6714
RESID(-2)	-0.115537	0.052906	-2.183843	0.0296

R-squared	0.013613	Mean dependent var	-5.21E-16
Adjusted R-squared	-0.000240	S.D. dependent var	2.971899
S.E. of regression	2.972256	Akaike info criterion	5.032956
Sum squared resid	3145.014	Schwarz criterion	5.097458
Log likelihood	-904.9650	Hannan-Quinn criter.	5.058598
F-statistic	0.982642	Durbin-Watson stat	2.020028
Prob(F-statistic)	0.428191		

Lampiran 9.0 Hasil *Common Effect Model*

Dependent Variable: KN

Method: Panel Least Squares

Date: 01/21/23 Time: 10:16

Sample: 2009 2019

Periods included: 11

Cross-sections included: 33

Total panel (balanced) observations: 363

Variable	Coefficient	Std. Error	t-Statistic	Prob.
C	31.03756	3.584128	8.659724	0.0000
AKS	0.043872	0.028637	1.532007	0.1264
AHP	-0.166009	0.025781	-6.439163	0.0000
ALD	-0.179362	0.030825	-5.818754	0.0000

R-squared	0.223484	Mean dependent var	12.22237
Adjusted R-squared	0.216995	S.D. dependent var	6.707993
S.E. of regression	5.935740	Akaike info criterion	6.410819
Sum squared resid	12648.65	Schwarz criterion	6.453732
Log likelihood	-1159.564	Hannan-Quinn criter.	6.427877
F-statistic	34.44046	Durbin-Watson stat	0.176180
Prob(F-statistic)	0.000000		

Lampiran 10.0 Hasil *Fixed Effect Model*

Dependent Variable: KN
 Method: Panel Least Squares
 Date: 01/21/23 Time: 10:17
 Sample: 2009 2019
 Periods included: 11
 Cross-sections included: 33
 Total panel (balanced) observations: 363

Variable	Coefficient	Std. Error	t-Statistic	Prob.
C	13.96898	1.482400	9.423221	0.0000
AKS	0.066345	0.013916	4.767552	0.0000
AHP	-0.063286	0.008392	-7.541670	0.0000
ALD	-0.050385	0.010499	-4.798814	0.0000

Effects Specification

Cross-section fixed (dummy variables)

R-squared	0.944520	Mean dependent var	12.22237
Adjusted R-squared	0.938581	S.D. dependent var	6.707993
S.E. of regression	1.662429	Akaike info criterion	3.948341
Sum squared resid	903.7197	Schwarz criterion	4.334562
Log likelihood	-680.6238	Hannan-Quinn criter.	4.101862
F-statistic	159.0562	Durbin-Watson stat	0.531132
Prob(F-statistic)	0.000000		

Lampiran 11.0 Hasil *Random Effect Model*

Dependent Variable: KN
 Method: Panel EGLS (Cross-section random effects)
 Date: 01/21/23 Time: 10:17
 Sample: 2009 2019
 Periods included: 11
 Cross-sections included: 33
 Total panel (balanced) observations: 363
 Swamy and Arora estimator of component variances

Variable	Coefficient	Std. Error	t-Statistic	Prob.
C	14.20068	1.754770	8.092614	0.0000
AKS	0.066177	0.013799	4.795656	0.0000
AHP	-0.064686	0.008378	-7.721163	0.0000
ALD	-0.052292	0.010476	-4.991757	0.0000

Effects Specification

	S.D.	Rho
Cross-section random	5.469755	0.9154
Idiosyncratic random	1.662429	0.0846

Weighted Statistics

R-squared	0.245402	Mean dependent var	1.115368
Adjusted R-squared	0.239097	S.D. dependent var	1.926453
S.E. of regression	1.680441	Sum squared resid	1013.773

F-statistic	38.91677	Durbin-Watson stat	0.483636
Prob(F-statistic)	0.000000		

Unweighted Statistics

R-squared	0.134498	Mean dependent var	12.22237
Sum squared resid	14098.14	Durbin-Watson stat	0.034777

Lampiran 12.0 Hasil Uji Lagrange Multiplier

Lagrange Multiplier Tests for Random Effects

Null hypotheses: No effects

Alternative hypotheses: Two-sided (Breusch-Pagan) and one-sided
(all others) alternatives

	Test Hypothesis		
	Cross-section	Time	Both
Breusch-Pagan	1298.230 (0.0000)	0.415299 (0.5193)	1298.646 (0.0000)
Honda	36.03097 (0.0000)	-0.644437 --	25.02205 (0.0000)
King-Wu	36.03097 (0.0000)	-0.644437 --	17.01880 (0.0000)
Standardized Honda	37.57028 (0.0000)	-0.328398 --	22.57832 (0.0000)
Standardized King-Wu	37.57028 (0.0000)	-0.328398 --	14.66571 (0.0000)
Gourierioux, et al.*	--	--	1298.230 (< 0.01)

*Mixed chi-square asymptotic critical values:

1%	7.289
5%	4.321
10%	2.952

Lampiran 13.0 Hasil Uji Chow

Redundant Fixed Effects Tests

Equation: Untitled

Test cross-section fixed effects

Effects Test	Statistic	d.f.	Prob.
Cross-section F	132.805022	(32,327)	0.0000
Cross-section Chi-square	957.879530	32	0.0000

Cross-section fixed effects test equation:

Dependent Variable: KN

Method: Panel Least Squares

Date: 01/21/23 Time: 10:18

Sample: 2009 2019

Periods included: 11

Cross-sections included: 33

Total panel (balanced) observations: 363

Variable	Coefficient	Std. Error	t-Statistic	Prob.
C	31.03756	3.584128	8.659724	0.0000

AKS	0.043872	0.028637	1.532007	0.1264
AHP	-0.166009	0.025781	-6.439163	0.0000
ALD	-0.179362	0.030825	-5.818754	0.0000
R-squared	0.223484	Mean dependent var		12.22237
Adjusted R-squared	0.216995	S.D. dependent var		6.707993
S.E. of regression	5.935740	Akaike info criterion		6.410819
Sum squared resid	12648.65	Schwarz criterion		6.453732
Log likelihood	-1159.564	Hannan-Quinn criter.		6.427877
F-statistic	34.44046	Durbin-Watson stat		0.176180
Prob(F-statistic)	0.000000			

Lampiran 14.0 Hasil Uji Hausman

Correlated Random Effects - Hausman Test

Equation: Untitled

Test cross-section random effects

Test Summary	Chi-Sq. Statistic	Chi-Sq. d.f.	Prob.
Cross-section random	10.821579	3	0.0127

Cross-section random effects test comparisons:

Variable	Fixed	Random	Var(Diff.)	Prob.
AKS	0.066345	0.066177	0.000003	0.9257
AHP	-0.063286	-0.064686	0.000000	0.0035
ALD	-0.050385	-0.052292	0.000000	0.0070

Cross-section random effects test equation:

Dependent Variable: KN

Method: Panel Least Squares

Date: 01/21/23 Time: 10:19

Sample: 2009 2019

Periods included: 11

Cross-sections included: 33

Total panel (balanced) observations: 363

Variable	Coefficient	Std. Error	t-Statistic	Prob.
C	13.96898	1.482400	9.423221	0.0000
AKS	0.066345	0.013916	4.767552	0.0000
AHP	-0.063286	0.008392	-7.541670	0.0000
ALD	-0.050385	0.010499	-4.798814	0.0000

Effects Specification

Cross-section fixed (dummy variables)

R-squared	0.944520	Mean dependent var	12.22237
Adjusted R-squared	0.938581	S.D. dependent var	6.707993
S.E. of regression	1.662429	Akaike info criterion	3.948341
Sum squared resid	903.7197	Schwarz criterion	4.334562
Log likelihood	-680.6238	Hannan-Quinn criter.	4.101862
F-statistic	159.0562	Durbin-Watson stat	0.531132
Prob(F-statistic)	0.000000		